

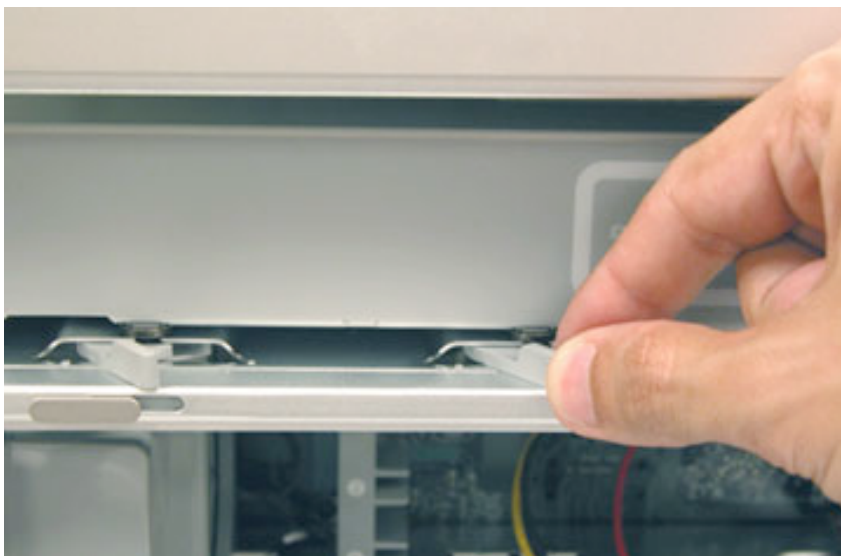
Source ATITECH :

### ...Removing the Optical Drive

The RADEON 9800 Pro requires a connection to the computer's power supply. On the Power Mac G5, the only available 4-pin molex connector is on the built-in optical drive (DVD/Superdrive). The drive is easily removed to access its power connector. The hard drives in the G5 are Serial ATA and feature a different power connector.

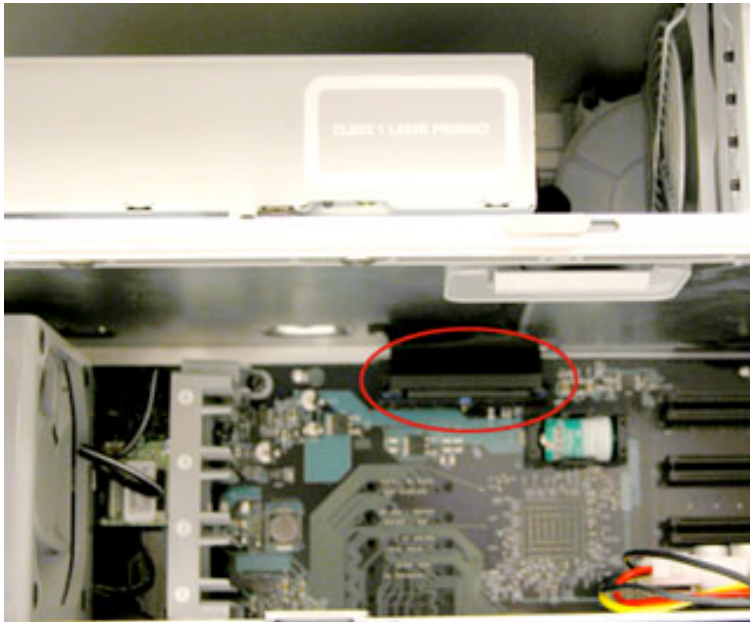
Looking at the computer from the right side, the optical drive is at the very top. On the right side of the drive (facing you) there are two locking levers/tabs that hold the drive in place. One at a time, grip each lever and swing it to the left 90 degrees until you feel a light click and it unlocks the drive.

Do not attempt to remove the drive at this time, it is still attached to the computer by two cables!

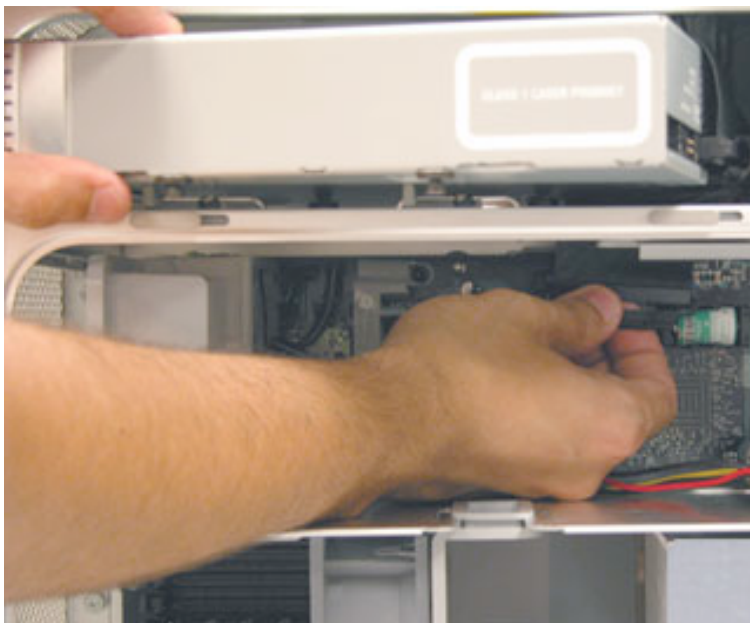


Continue with the following steps.

Before removing the optical drive, its data cable must first be disconnected from the computer. Under the shelf that supports the drive, on the computer main board, you will see an ATA connector with a plastic loop on it.

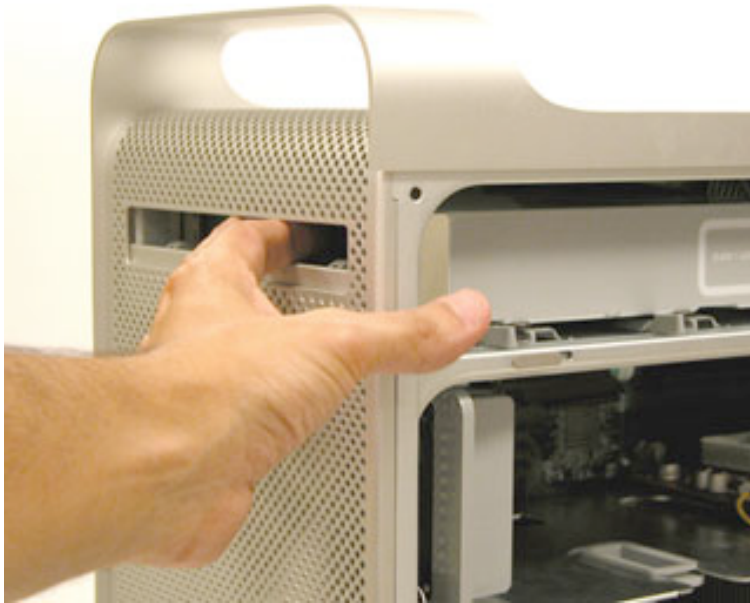


Reach under the shelf and grip the plastic loop/connector with one hand and gently pull it back toward you. Try not to rock the connector nor bend it up/down, to prevent damaging its pins.



To make it easier to remove the drive, and to provide some leverage, open the sliding drive cover on the front of the computer and place one or

two fingers of the left hand inside to brace the drive. With your right hand, brace the back of the drive.



Holding the drive firmly with your fingers, use your thumbs to push on the shelf supporting the drive. This will allow the drive to slide forward.

Slide the drive outward one or two inches. Reach back under the shelf, take hold of the drive's ATA connector and gently push it upward through the hole in the shelf. The connector and its attached cable should now be above the shelf, with the drive itself.

The drive is still connected to its power connector.

Gently pull the drive out the rest of the way, making sure not to stress the black power cables.

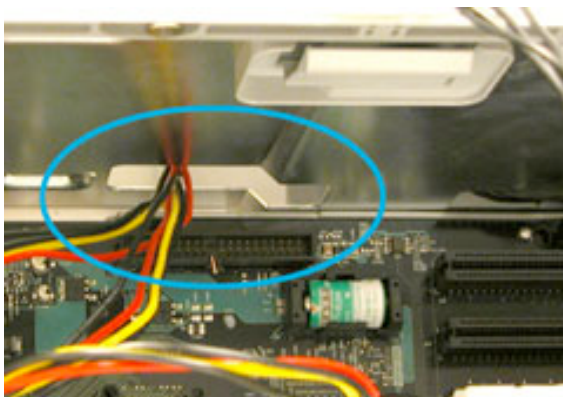
Gripping the power connector firmly, disconnect it from the optical drive. Try not to rock the connector to prevent damaging the board its attached to on the drive.

Set the optical drive aside somewhere safe for a few moments.



#### Connecting the RADEON 9800 Pro 'Y' Power Connector

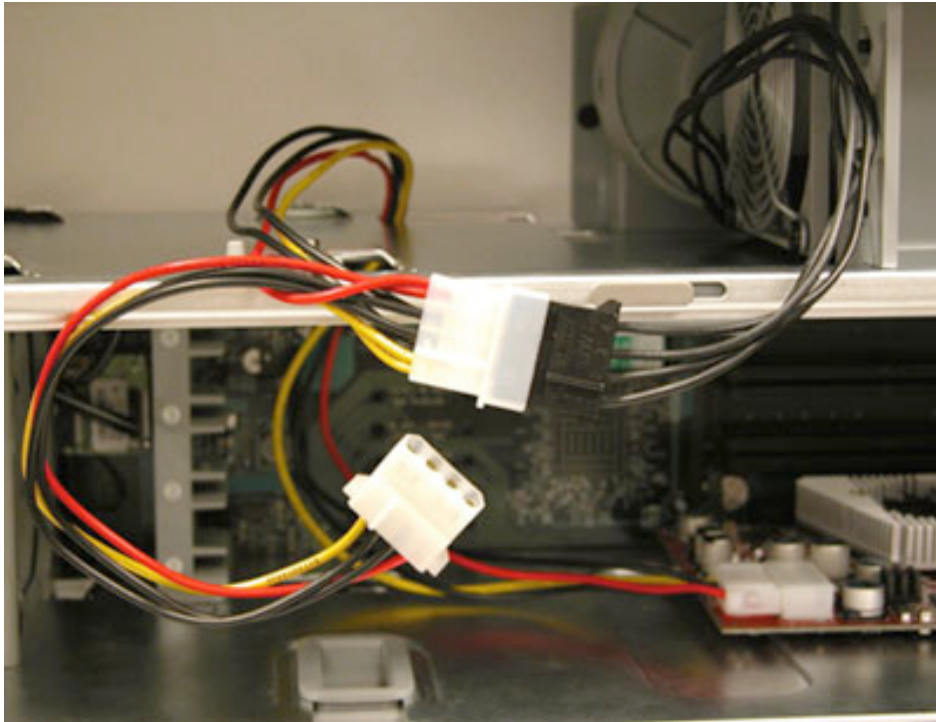
Locate the two free "ends" of the RADEON 9800 'Y' power cable. Route both the male and female white molex power connectors up through the hole in the drive shelf where the optical drive's ATA connector was inserted .



Once the majority of the 'Y' cable is up through the shelf, connect the



male white molex connector to the black female power connector that used to connect to the optical drive.



### Reinstalling the Optical Drive

Pick up the optical drive and connect the remaining female white molex connector to its power connector.



Holding the drive in one hand, use the other hand to straighten the ATA cable and power cables, pushing them into the computer and near the hole at the back of the shelf.

Insert as much of the 'Y' and black power cables as possible into the hole in the shelf and down into the computer's bottom half.

Place the optical drive on the shelf, lining up its locking pins with the guides on the shelf near the locking levers. Only push the drive in a few inches.



if you want the long version, go to <https://support.ati.com> and type G5 9800 in the search tab...